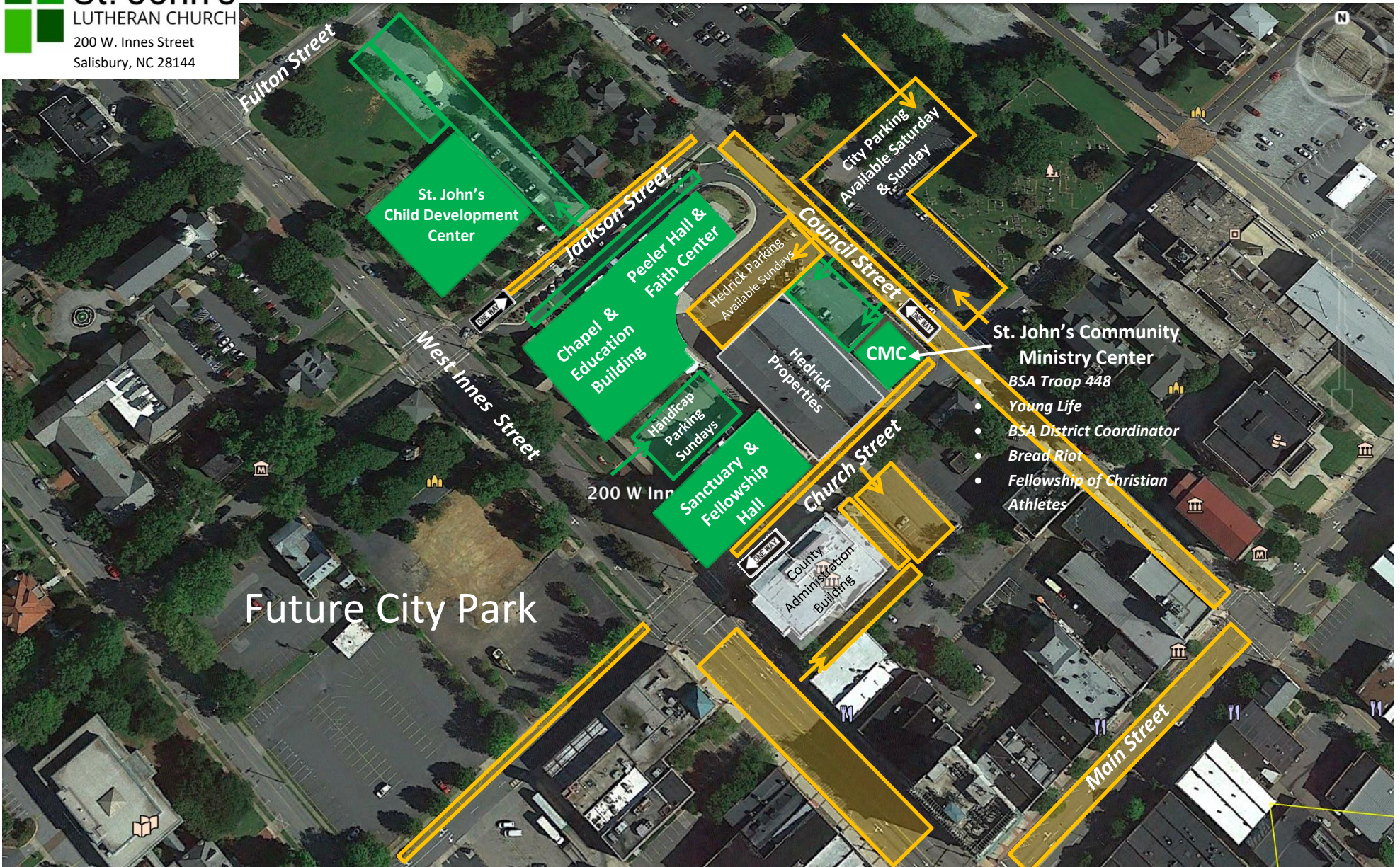


Saturday & Sunday Parking Options

7/23/2018

St. John's
LUTHERAN CHURCH
200 W. Innes Street
Salisbury, NC 28144



- St. John's Community Ministry Center**
- BSA Troop 448
 - Young Life
 - BSA District Coordinator
 - Bread Riot
 - Fellowship of Christian Athletes

Green St. John's Lutheran Church parking

Yellow Private parking spaces only available on Saturday & Sundays.
Parking along streets available weekends and during the week.